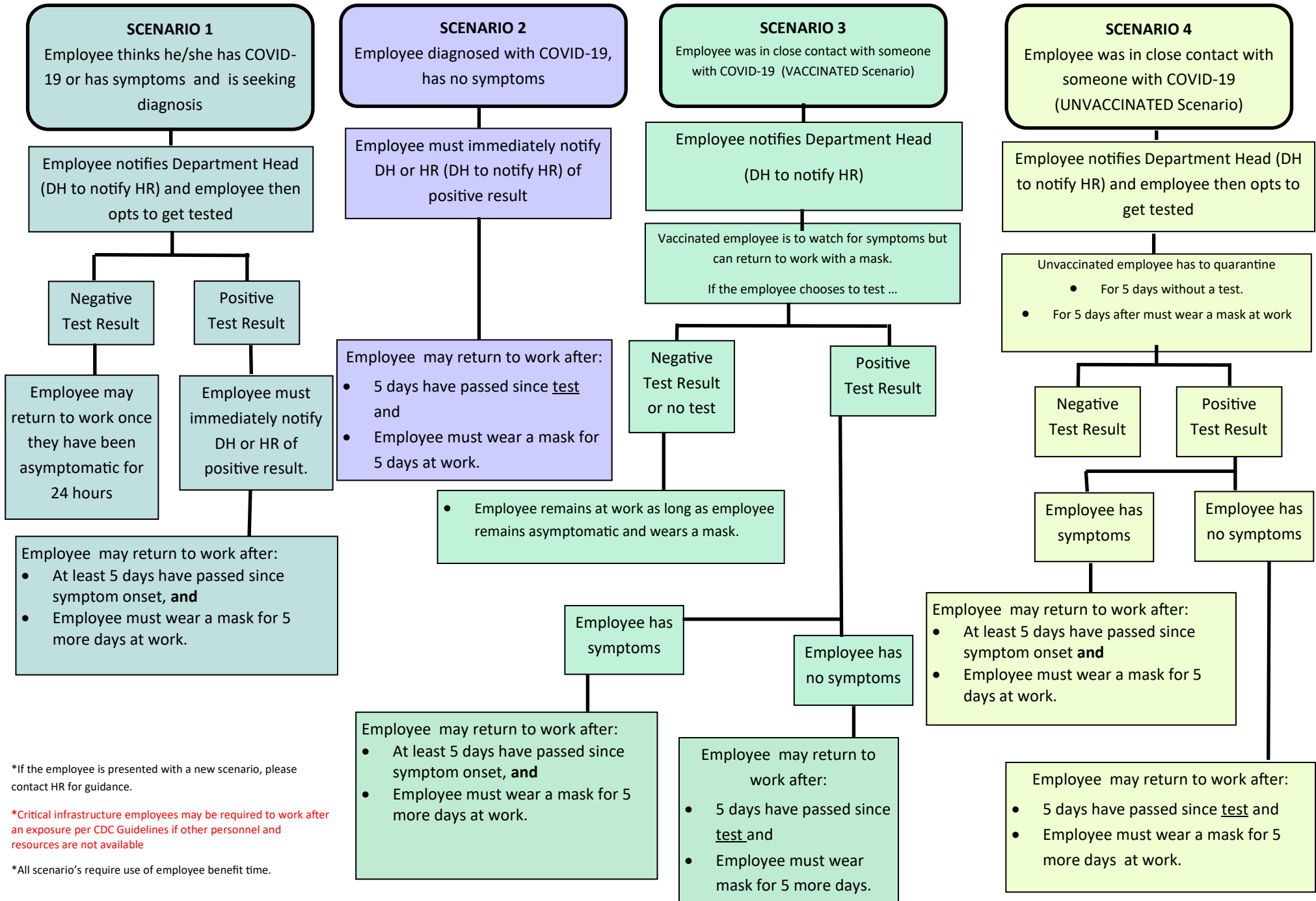


# Macomb Township COVID-19 Procedure Flowchart

Effective January 3, 2022, subject to modification based on CDC guidelines.



\*If the employee is presented with a new scenario, please contact HR for guidance.

\*Critical infrastructure employees may be required to work after an exposure per CDC Guidelines if other personnel and resources are not available

\*All scenario's require use of employee benefit time.